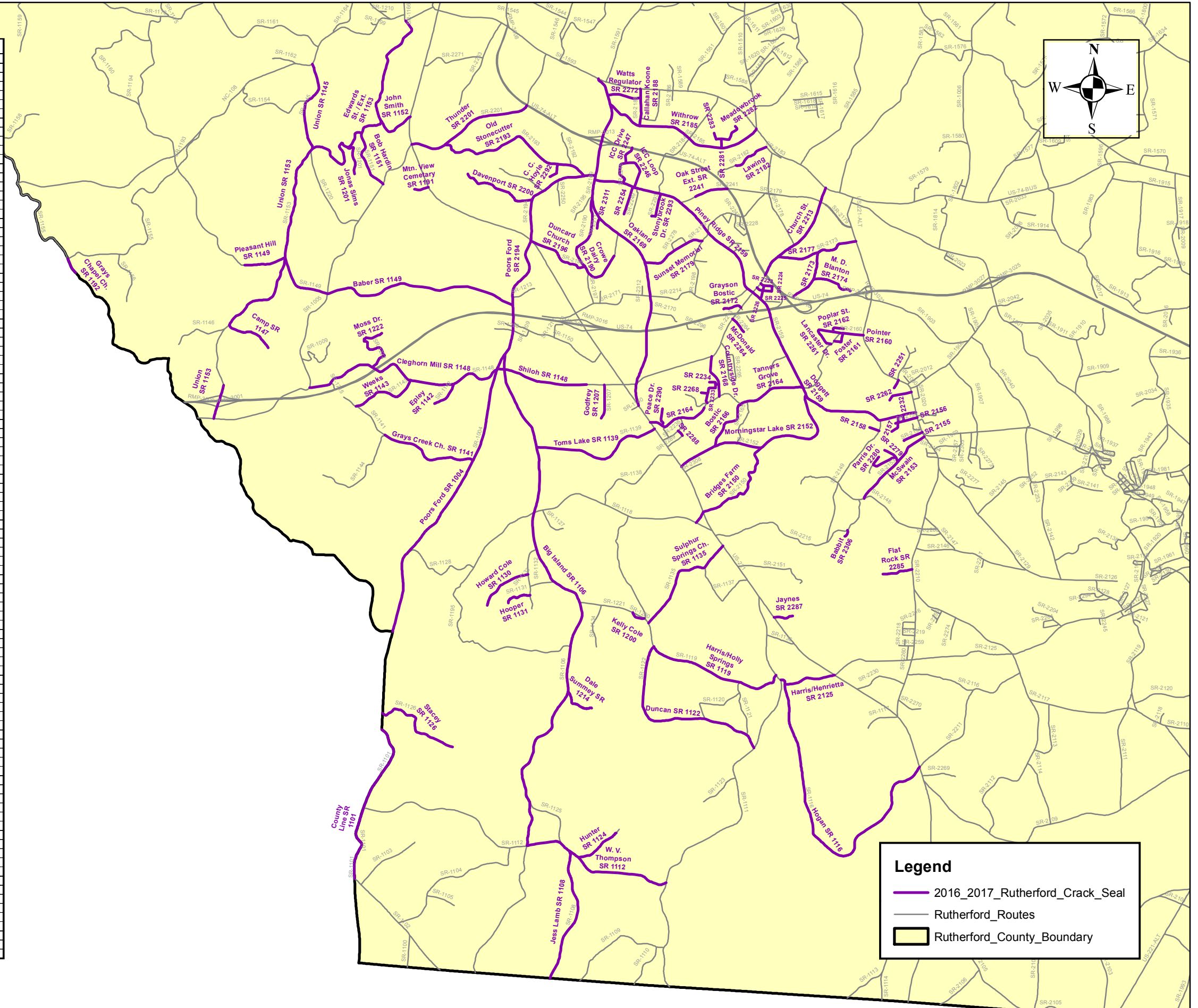


# 2016/2017 Rutherford County Crack Seal

RUTHERFORD - SECONDARY				WIS 13.20811				
Map	Name	Route	Route ID	From Description	To Description	From MP	To MP	Length
1	Babba	SR 2906	40002306	SR 2215	END MAINT	0.000	0.100	0.100
2	Baber	SR 1149	40001149	SR 1004	SR 1153	0.000	3.360	3.360
3	Pleasant Hill	SR 1149	40001149	SR 1153	PVMT CHG	3.360	3.900	0.540
4	Countryside Dr.	SR 2168	40002168	SR 2164	SR 2213	0.000	0.560	0.560
5	Duncan	SR 1122	40001122	SR 1111	SR 1119	0.000	2.480	2.480
6	Hillside Dr.	SR 2281	40002281	SR 2185	SR 2282	0.000	0.120	0.120
7	Meadowbrook Dr.	SR 2282	40002282	SR 2283	END MAINT	0.000	0.390	0.390
8	Westerly Hills Dr.	SR 2283	40002283	SR 2282	END MAINT	0.000	0.080	0.080
9	Phillips Dr.	SR 2155	40002155	US 221 ALT	END MAINT	0.000	0.270	0.270
10	W. V. Thompson	SR 1112	40001112	SR 1111	SR 1106	0.000	2.002	2.002
11	Big Island	SR 1106	40001106	SR 1004	SR 1112	0.000	6.995	6.995
12	Tanners Grove	SR 2164	40002164	SR 2159	US 221	0.000	0.850	0.850
13	Tanners Grove	SR 2164	40002164	BEG 8PVT	US 221	1.450	2.260	0.810
14	Morningstar Lake	SR 2152	40002152	US 221	SR 2159	0.000	2.457	2.457
15	Callahan Koone	SR 2188	40002188	US 74 BUS	SR 2185	0.000	0.470	0.470
16	Chow Dairy	SR 2190	40002190	SR 2169	SCL SPINDL	0.000	1.580	1.580
17	Davenport	SR 2200	40002200	SR 2194	END MAINT	0.000	0.970	0.970
18	Hawthorne Lane	SR 2254	40002254	SR 2159	DEAD END	0.000	0.370	0.370
19	C. C. Hoyle	SR 2292	40002292	SR 2193	END MAINT	0.000	0.220	0.220
20	Old Stonecutter	SR 2193	40002193	SR 2194	SR 2201	0.000	2.130	2.130
21	Doggett	SR 2159	40002159	SR 2213	US 221 ALT	2.710	5.780	3.070
22	Piney Ridge	SR 2159	40002159	SR 2169	SR 2213	0.000	2.710	2.710
23	Grays Chapel Ch.	SR 1192	40001192	SR 1153	END MAINT	0.000	0.210	0.210
24	John Smith	SR 1152	40001152	SR 1153	US 221	0.000	0.530	0.530
25	Stacey	SR 1126	40001126	POLK CO	END MAINT	0.000	1.200	1.200
26	Oak Street Est.	SR 2241	40002241	SCL FRST C	US 74 ALT	0.210	0.639	0.429
27	Oakland	SR 2169	40002169	US 221	US 74 BUS	0.000	4.620	4.620
28	Poors Ford	SR 1004	40001004	POLK CO	US 221	0.000	5.580	5.580
29	Poors Ford	SR 2194	40002194	US 221	SR 2169	0.000	1.430	1.430
30	Thunder	SR 2201	40002201	US 221	US 74 ALT	0.000	1.670	1.670
31	Union	SR 1145	40001145	NC 108	SR 1153	0.000	1.210	1.210
32	Union	SR 1153	40001153	SR 1145	SR 1147	3.060	5.800	2.740
33	Union	SR 1153	40001153	PVMT CHG	SR 1005	6.660	7.110	0.450
34	Grays Creek Ch.	SR 1141	40001141	SR 1004	SR 1144	0.000	1.270	1.270
35	Weeks	SR 1143	40001143	SR 1148	SR 1141	0.000	0.890	0.890
36	Withrow	SR 2185	40002185	US 74 BUS	SR 2169	0.000	2.160	2.160
37	Edwards St. / Est.	SR 1153	40001153	NC 108	SR 1145	0.000	3.060	3.060
38	Shiloh	SR 1148	40001148	END 20PVT	SR 1004	0.480	1.660	1.180
39	Mtn. View Cemetery	SR 1191	40001191	US 221	DEAD END	0.000	0.190	0.190
40	Moss Dr.	SR 1222	40001222	SR 1148	END MAINT	0.000	0.920	0.920
41	Watts Regulator	SR 2272	40002272	SR 2188	SR 2169	0.000	0.430	0.430
42	Hogan	SR 1116	40001116	SR 1111	US 221	0.000	4.224	4.224
43	Church St.	SR 2213	40002213	US 74 BUS	US 74 ALT	0.000	1.412	1.412
44	Crestview Dr.	SR 2223	40002223	SR 2213	SR 2224	0.000	0.150	0.150
45	Hillcrest Dr.	SR 2224	40002224	SR 2223	SR 2225	0.000	0.070	0.070
46	Woodcrest Ave.	SR 2226	40002226	SR 2223	SR 2159	0.000	0.190	0.190
47	Longview Dr.	SR 2225	40002225	SR 2213	SR 2224	0.000	0.200	0.200
48	M. D. Blanton	SR 2174	40002174	SR 2173	END MAINT	0.000	0.530	0.530
49	Washington St.	SR 2173	40002173	END PVMT	US 221 ALT	0.000	1.242	1.242
50	Brackett	SR 2177	40002177	SR 2173	SR 2213	0.000	0.535	0.535
51	Bob Hardin	SR 1151	40001151	SR 1153	SR 1005	0.000	0.800	0.800
52	Bostic	SR 2166	40002166	SR 2164	SR 2152	0.000	0.730	0.730
53	Bridges Farm	SR 2150	40002150	SR 2152	SR 1118	0.000	1.510	1.510
54	Camp	SR 1147	40001147	SR 1145	END MAINT	0.000	0.620	0.620
55	Cleghorn Mill	SR 1148	40001148	SR 1004	SR 1005	1.160	4.440	2.780
56	County Line	SR 1101	40001101	SR 1102	POLK CO	0.000	2.140	2.140
57	Dale Summey	SR 1214	40001214	SR 1106	DEAD END	0.000	0.435	0.435
58	Duncard Church	SR 2196	40002196	US 221	SR 2190	0.000	0.810	0.810
59	Epley	SR 1142	40001142	SR 1148	DEAD END	0.000	0.380	0.380
60	Fish Camp	SR 2251	40002251	US 221 ALT	DEAD END	0.000	0.120	0.120
61	Flat Rock	SR 2285	40002285	SR 2210	DEAD END	0.000	0.390	0.390
62	Foster	SR 2161	40002161	SR 2160	SR 2160	0.000	0.210	0.210
63	Godfrey	SR 1207	40001207	SR 1148	DEAD END	0.000	0.440	0.440
64	Grayson Bostic	SR 2172	40002172	END PVMT	SR 2213	0.000	0.240	0.240
65	Harris/Henrietta	SR 2125	40002125	US 221	SR 1116	4.724	5.394	0.670
66	Harris/Holly Springs	SR 1119	40001119	SR 1111	SR 1122	0.000	1.800	1.800
67	Hollywood St.	SR 2156	40002156	US 221 ALT	END MAINT	0.000	0.280	0.280
68	Hooper	SR 1131	40001131	SR 1133	DEAD END	0.000	0.337	0.337
69	Howard Cole	SR 1130	40001130	SR 1132	DEAD END	0.000	0.700	0.700
70	Hunter	SR 1124	40001124	SR 1112	END PVMT	0.000	0.600	0.600
71	Hunter Carver Lane	SR 2311	40002311	SR 2169	END MAINT	0.000	0.135	0.135
72	ICC Drive	SR 2247	40002247	US 74 ALT	SR 2246	0.000	0.230	0.230
73	ICC Loop	SR 2246	40002246	SR 2159	SR 2159	0.000	0.800	0.800
74	J. E. Morrow St.	SR 2157	40002157	SR 2159	END MAINT	0.000	0.240	0.240
75	Jaynes	SR 2287	40002287	US 221	END MAINT	0.000	0.250	0.250
76	Jess Lamb	SR 1108	40001108	SR 1112	SC SL	0.000	1.755	1.755
77	Jim Ford	SR 2158	40002158	SR 2149	END MAINT	0.000	0.130	0.130
78	Jonas Sims	SR 1201	40001201	SR 1153	END MAINT	0.000	0.450	0.450
79	Kelly Cole	SR 1200	40001200	SR 1221	SR 1221	0.000	0.180	0.180
80	Lakeside Dr.	SR 2233	40002233	SR 2168	SR 2164	0.000	0.360	0.360
81	Lakewood Dr.	SR 2268	40002268	SR 2233	DEAD END	0.000	0.090	0.090
82	Woodside Dr.	SR 2234	40002234	SR 2233	END MAINT	0.000	0.110	0.110
83	Lancaster Dr.	SR 2261	40002261	SR 2162	SR 2160	0.000	0.460	0.460
84	Pointer	SR 2160	40002160	WCL ALEX M	US 221 ALT	0.986	1.256	0.270
85	Poplar St.	SR 2162	40002162	SR 2160	WCL ALEX M	0.000	0.290	0.290
86	Stonybrook Dr.	SR 2293	40002293	SR 2159	DEAD END	0.000	0.350	0.350
87	Sulphur Springs Ch.	SR 1135	40001135	SR 1122	US 221	0.000	1.505	1.505
88	Sunset Memorial	SR 2179	40002179	SR 2198	SR 2169	2.414	3.254	0.840
89	Toms Lake	SR 1139	40001139	SR 1106	US 221	0.000	1.710	1.710
90	Vine St.	SR 2232	40002232	SR 2159	SR 2156	0.000	0.080	0.080
91	Woodlawn Dr.	SR 2288	40002288	SR 2236	SR 2289	0.000	0.080	0.080
92	Windy Hill Dr.	SR 2262	40002262	US 221 ALT	DEAD END	0.000	0.320	0.320
93	Peacet Dr.	SR 2290	40002290	SR 2164	DEAD END	0.000	0.240	0.240
94	Parris Dr.	SR 2280	40002280	SR 2279	END MAINT	0.000	0.450	0.450
95	Parris Dr.	SR 2279	40002279	SR 2153	DEAD END	0.000	0.230	0.230
96	McSwain	SR 2153	40002153	SR 2210	SR 2148	0.000	1.130	1.130
97	McDonald	SR 2264	40002264	SR 2213	END MAINT	0.000	0.220	0.220
98	Lawing	SR 2182	40002182	SR 2183	END PVMT	0.000	0.480	0.480



**Legend**

- 2016\_2017\_Rutherford\_Crack\_Seal
- Rutherford\_Routes
- Rutherford\_County\_Boundary